

Oasis.

A SOCIAL PLUG-IN for Institute of Palliative Medicine

Kozhikode, Kerala.

*** National Architecture Design Competition ***

COMPETITION BRIEF



oasis.iiakerala.org

Can you manifest
EMPATHY
within a space?

Can you mould
COMPASSION
into an environment?

01. Introduction.

Institute of Palliative Medicine, Kozhikode is the pioneer of palliative care movement in South East Asia, providing inpatient & outpatient care, homecare & rehabilitation and comprehensive training programs. It is the first WHO collaborating centre in developing countries and the first such initiative in the world to develop **patient care with community participation**, which makes IPM more of a social initiator than a hospice care centre. IPM's campus is located in Kozhikode Kerala, providing free palliative care services to patients across the district for over 30 years.

Recognizing the profound history of service and global impact of social interventions facilitated by the Institute of Palliative Medicine (IPM), the Indian Institute of Architects (IIA) Kerala Chapter, embarked on a collaborative endeavour aiming to enhance the campus infrastructure, paving the way for a sustainable long-term development and positioning it as a centre of excellence in the field. With Samagata Foundation, an organisation of young individuals supporting the whole cause, IIA Kerala Chapter, along with IIA Calicut Centre meticulously crafted a comprehensive masterplan for IPM, incorporating various enhancements; including planning for a recreational region inside the masterplan termed the "Oasis." Symbolizing a place offering solace, support, and relief, Oasis is envisioned as a **social plug-in** designed to foster increased public engagement within the campus. In an attempt to invite a wider participation from the architects community, Oasis was proposed as a National Architecture Design Competition presenting an opportunity for architects around the country to contribute their design ideas to the initiative along with providing a wider reach for IPM and its activities.



WATER COLOUR RENDERING OF THE IPM CAMPUS BY DR.ANWAR HUSSAIN (DIRECTOR - IPM)

Oasis: National Architecture Design Competition, initiated by IIA Kerala Chapter and organised by IIA Calicut Centre aims at developing a small transformative social plug-in, as a component of the new masterplan proposed by IIA for the Institute of Palliative Medicine (IPM), Kozhikode. The competition seeks innovative design proposals that cultivate a sense of community, comfort, and connection within the IPM campus with the goal of enhancing the overall experience for patients, families, and caregivers. We welcome architects from across the nation to unleash their creativity and imagination in crafting spaces that reflect the spirit of IPM. This is an opportunity to contribute to the noble mission of palliative care while showcasing the power of architecture to inspire a positive change. We eagerly anticipate ground breaking ideas that will shape the future of social engagement within IPM and beyond.

What is Palliative Care?

Palliative care is a specialized medical approach focused on improving the quality of life for individuals facing serious illnesses or conditions. It aims to provide relief from those serious illnesses, associated symptoms, pain, and stress, while also addressing psychological, social, and spiritual needs. A team of healthcare professionals, including doctors, nurses, social workers and volunteers work together to support patients and their families in navigating complex medical decisions and finding comfort and dignity in their journey. Unlike hospice care, palliative care can be provided at any stage of an illness and can be integrated with other curative treatments.

What does IPM do?

The Institute of Palliative Medicine is the training, research and outreach arm of the Pain and Palliative Care Society (PPCS). In addition to being a technical advisor to World Health Organization, IPM as an organisation has several other international palliative initiatives in countries like Bangladesh, Thailand, Indonesia, Sri Lanka, Ethiopia and Switzerland. The IPM campus in Kozhikode, Kerala has 5 major activities; which include outpatient care, inpatient care, training & research, home care and rehabilitation. IPM aims to establish community based palliative care, cultivating care givers and patient care volunteers to provide a pleasant and comfortable environment for morbid patients. The palliative services provided by IPM are completely **free of cost**.



IPM'S OUTPATIENT PROGRAM



IPM'S INPATIENT PROGRAM



IPM'S TRAINING PROGRAM



IPM'S RESEARCH PROGRAM



IPM'S REHABILITATION PROGRAM



IPM'S HOME CARE PROGRAM

Collaboration with IIA

The physical campus of the Institute of Palliative Medicine (IPM), with its two-decade-old infrastructure, was in need of a **significant spatial upgrade** and contemporary facilities to align with its international reputation. Recognizing the importance of enhancing the campus to reflect the status of IPM as an international entity in the field of palliative care, the Indian Institute of Architects (IIA) Kerala Chapter, along with the social wing of IIA Calicut Centre, took a proactive step to assist in this endeavour. Understanding that IPM deserved a campus that not only met but exceeded global benchmarks, IIA with the support of Samagata Foundation, embarked on preparing a **comprehensive masterplan** for the institute. This social initiative is a part of IIA's commitment to become a catalyst for positive change, utilizing its expertise and resources to contribute to the betterment of society. Representatives from the IIA Kerala Chapter, IIA Calicut Centre and IPM met together to discuss the potential of a new masterplan.

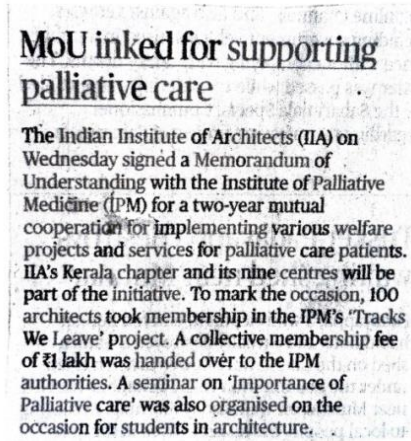


DISCUSSION BETWEEN THE REPRESENTATIVES OF IPM AND IIA

About Samagata

Samagata Foundation is a non-profit organisation in India that supports projects and ideas that bring value to society. When IIA crossed paths with Samagata, a group of young minds with a vision to support noble social causes, they offered their full support for the IIA's IPM initiative, and agreed to financially support all the necessary processes required to make the masterplan project a successful endeavour.

- **02 October 2023:** On World Architecture Day, IIA conducted a discussion with IPM representatives on Design & Healing and signed a Memorandum of Understanding with IPM for a two-year mutual cooperation for implementing various welfare projects and services for palliative care.



POSTERS AND NEWSPAPER ARTICLES ON THE COLLABORATION OF IPM AND IIA

- **02 December 2023:** IIA Calicut Centre organised an IPM Master Plan workshop which was conducted collaboratively at the IPM campus and IIA Calicut Office Building.
- **17 & 22 January 2024:** IIA Calicut Centre organised multiple IPM Think Tank discussions at IIA Calicut Centre Office to discuss on the Master Plan development for IPM.



17 JANUARY 2023

22 JANUARY 2023

29 JANUARY 2023

DOCUMENTATION OF THE THINK TANK DISCUSSIONS AND DESIGN PRESENTATIONS

- **29 January 2024:** IIA Calicut Centre presented the proposal for the IPM Master Plan to its representatives.
- **07 February 2024:** The IIA decided to set up a national level architectural competition to design a social plug in for the IPM Master Plan.

02. About the Institute

Background

Established in 1993 under the leadership of Dr. M.R. Rajagopal, often referred to as the "father of palliative care in India," the Institute emerged as a beacon of compassion and care for those suffering from terminal illnesses. Initially founded as a small clinic, IPM swiftly expanded its services and expertise, becoming one of the leading institutions in the world dedicated to palliative care.



1993

Pain and Palliative Care Society formed. First palliative care outpatient clinic in India starts functioning from a small room near the Department of anaesthesia in Medical College, Calicut.



1995

First palliative home care in the country started. Mobile unit donated by British High Commission



1996

Designation as WHO Demonstration Project. Starting of Foundation Course in Palliative Care, the first residential course in palliative care in the developing world.



1998

Basic Certificate Course in Palliative Medicine and Basic Certificate Course in Palliative Nursing started. Beginning of regular training programs for doctors and nurses in South East Asia.



1999

Neighbourhood Network in Palliative Care (NNPC) formed jointly by four organisations - Pain and Palliative Care Society, Malappuram Initiative in Palliative Care, Alpha Charitable Trust and Justice Sivaraman Foundation. NNPC evolves further in the next few years to become World's largest palliative care network.



2001

Launching of Institute of Palliative Medicine and works initiated for the physical campus near Medical College, Kozhikode.



2007

Institute of Palliative Medicine designated as the State level coordinating and resource centre to implement the first palliative care program under National Rural Health Mission in the country. The NRHM project in palliative care becomes the facilitator development of for palliative care services in local self government sector. Over the four years, Kerala with more than 60,000 patients covered by various palliative care services, becomes one of the most well covered regions in palliative care in the world.



2008

Signing of a Memorandum of Understanding with Bangabandhu Sheikh Mujib Medical University in Dhaka. Starting of first palliative care service in Bangladesh.



2009

Launching of 'Footprints', the social rehabilitation program for bed ridden patients. The Footprints quickly developed in an years time to help more than 50 patients become financially independent through skill development initiatives such as umbrella making, jewellery making etc.



2010

Launching of 24 x 7 Home Care Program. Calicut becomes the first city in India to have round the clock home care for bedridden patients. Institute of Palliative Medicine designated as WHO Collaborating Centre for Community Participation in Palliative Care and Long Term Care, becoming the first institution in the Developing World to attain WHOCC status in palliative care. Launching of Tracks We Leave aiming to develop a global community in support of palliative care.

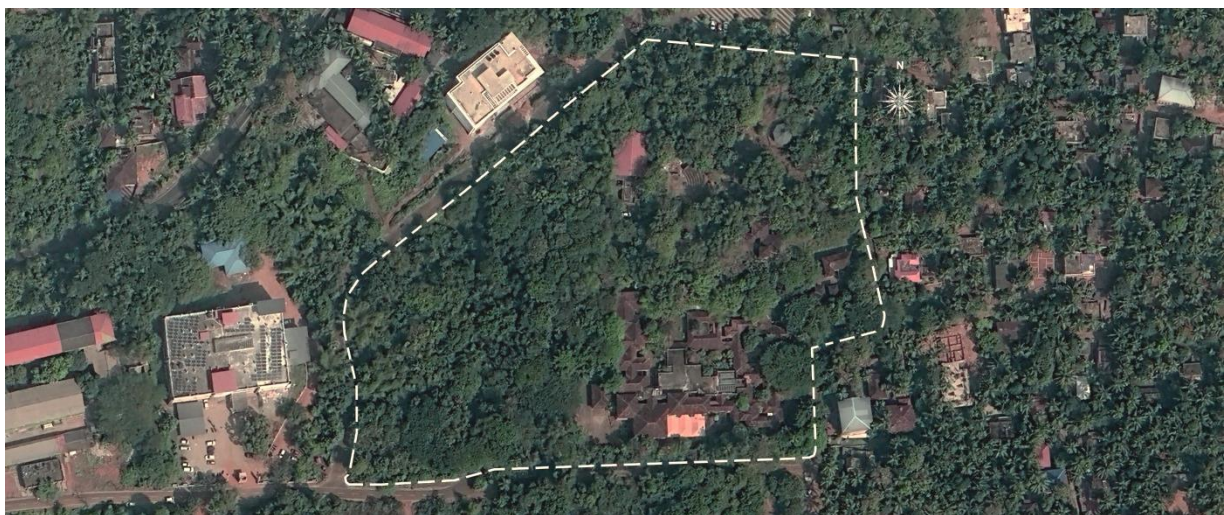
The Campus & Context



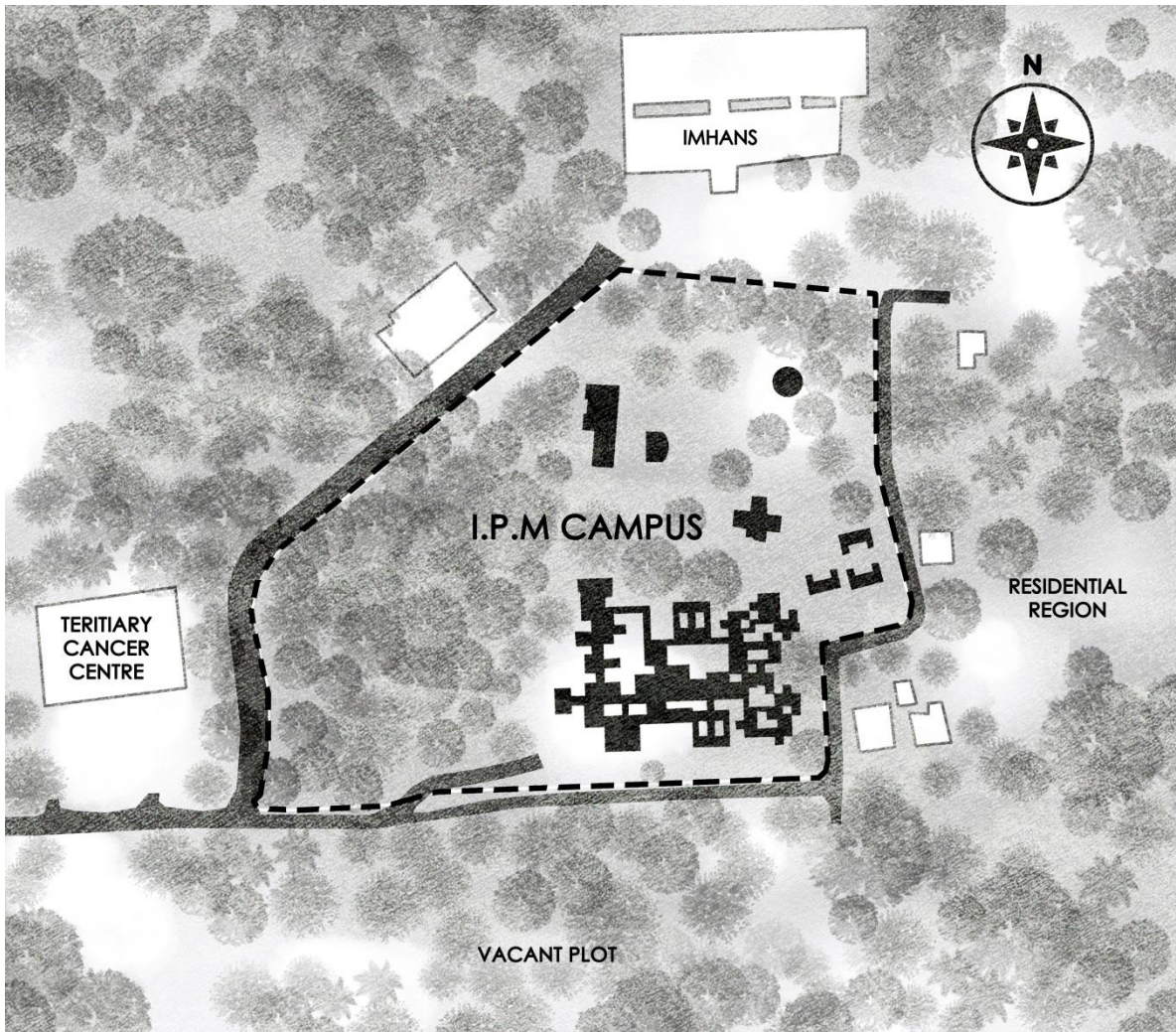
LOCATION MAP OF THE IPM CAMPUS

Located near Govt. Medical College, Kozhikode, the Institute of Palliative Medicine includes a main palliative block, a guest house block, two residential blocks, an auditorium block, an open air theatre and a discussion pavilion inside the **7.5 acre campus**. The IPM campus is surrounded by the Tertiary Cancer Care Centre on the west, Institute of Mental Health and Neuro Sciences on the north, a large vacant plot owned by the Medical College on the south and a group of residential buildings towards the east.

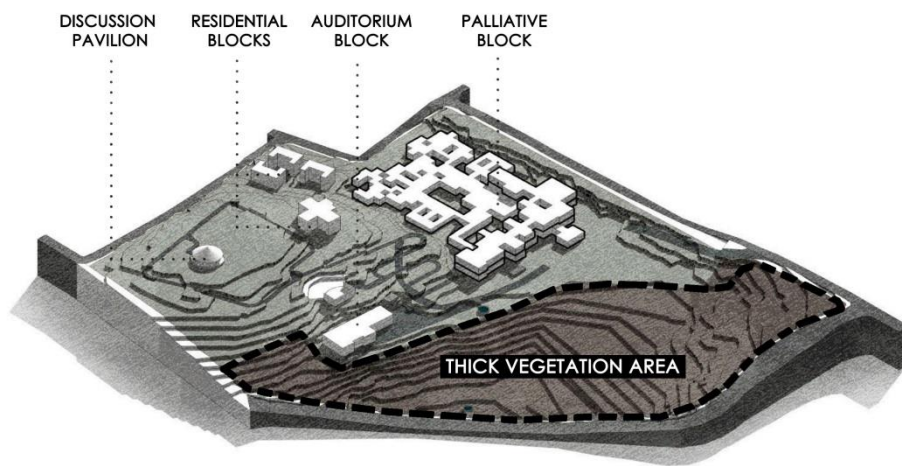
The terrain has an **undulating topography**, marked by steep contours within the site. The entire campus is enveloped by lush greenery, creating a tranquil enclave shielded from the bustle of the surrounding areas. This greenery not only enhances the aesthetics of the IPM but also contributes to the serene ambiance vital for patient care and well-being. The north-western part of the campus consists of very thick vegetation filled with densely packed trees. A small *kaavu* (ritualistic prayer area) is also present within the **dense vegetation** inside the campus. The campus site has heavily contoured landscape with thick vegetation around its lowest contour and a comparatively flat open land along the highest contour. The main palliative building is located on the moderately flat region in between the contours with pedestrian paths running throughout the campus connecting the building blocks with each other.



SATELLITE MAP OF THE IPM CAMPUS



CONTEXT MAP OF THE IPM CAMPUS



ISOMETRIC REPRESENTATION OF THE EXISTING IPM CAMPUS

Existing Conditions & IIA's Proposal



OUTDOOR AREAS CONVERTED TO EQUIPMENT DUMPING YARDS



DETERIORATIONS IN THE OVERALL STRUCTURE

During the visit to IPM, it was evident that many sections of the main palliative block remained unused, used as equipment dumping yards, resulting in **diminished activity** in these spaces. Courtyards were neglected, overgrown with grass and bushes, rendering them unsuitable for public use. Moreover, signs of deterioration were observed around the building structures, highlighting the urgent need for maintenance and refurbishment efforts. IIA put forward a new masterplan that aims to preserve the essence of the place by keeping **interventions minimal**, while introducing better recreational areas around the campus. The unused passage structure of the palliative block was demolished to make way for a new large recreational plaza. The porch was also proposed to be relocated to the southern part of the palliative block. Creation of a new play area atop the highest contour, along with the relocation of the discussion pavilion is also a significant addition. The north-western section of the campus, with dense vegetation, naturally offered shade and thermal comfort to the outdoor activity areas. Consequently, it was preserved in its original state to maintain the site's inherent natural attributes.

Before



THE EXISTING INSTITUTE OF PALLIATIVE MEDICINE CAMPUS

After:



PROPOSED IPM MASTERPLAN BY INDIAN INSTITUTE OF ARCHITECTS KERALA CHAPTER

Activities inside the Campus

The **IPM outpatient clinic** diagnoses around 30 to 40 people per day. More than 2000 patients with major problems related to old age, cancer, stroke, spinal injuries etc. register as new patients every year. In the past 25+ years IPM was able to provide services to almost 50,000 patients and their families. IPM has a **30 bed inpatient unit** for moribund patients with advanced diseases, preparing them to greet death in the least painful way possible. Patients with difficult physical/ emotional symptoms, patients with HIV/AIDS, bedridden patients and patients whose problems could not be resolved in OP care are also admitted for round the clock care. What sets IPM apart from conventional hospice care is the compassionate approach through which the organisation extends its hand to anyone in need, totally free of cost, constantly reassuring that the people of IPM are always there for them and they will always be treated **as a member of the family**.



VOLUNTEERS SPENDING TIME WITH THE IPM RESIDENTS



VOLUNTEERS SPENDING TIME WITH THE IPM RESIDENTS

The **home care program** of Palliative Care Society, Calicut is the only place in the country with a round the clock home care service. IPMS's home care covers around 20 to 25 houses each day and has more than 750 patients registered for regular home care in and around the district. Through comprehensive services like diagnosis by doctors, nursing care, distribution of medicines, personal treatment, educational support for children in their family, monthly ration etc. IPM has been able to touch the lives of many families both inside and outside of the campus.

IPM is one of the well-known palliative training centres in the world providing **certification courses** and **fellowship programs**. There are regular WHOCC certified courses for professionals and non-medical patient care/communication skill training programs. The Fellowship Program aims to create a group of palliative care workers with an in-depth knowledge of core issues in organising palliative care at the grass root level and well versed with the recent advances and challenges in palliative regionally, and globally.



GLIMPSE OF A PALLIATIVE TRAINING WORKSHOP AT IPM



DISCUSSIONS WITH INTERNATIONAL REPRESENTATIVES



PALLIATIVE VOLUNTEERS WITH THE IPM RESIDENTS



PROFESSIONAL TRAINEES AT IPM

IPM also provides **rehabilitation programs** aiding patients and their families with education, travel, food, and skills training for financial self-sufficiency and improving their quality of life. This includes training for umbrella making, jewellery making and other crafts. IPM also helps in marketing and selling these products through palliative care volunteers. In addition to providing patient care the IPM houses various cultural activities to engage their residents and attract public participation which are primarily initiated by their volunteers. IPM's **large network of volunteers** is essentially the backbone of the whole campus helping the institute to advance beyond conventional patient care.



ONAM CELEBRATION AT IPM



FUNDRAISING THROUGH CAKE MAKING CHALLENGE

IPM cultivates around 4000 to 5000 palliative care volunteers per year. The volunteers at IPM have their own organisational wing entrusted with the responsibilities of the activities in the campus. This gives the volunteers a sense of freedom to become **part of the decision making process** of the Institute. This is one of the major reasons why volunteers tend to frequently come back to the campus even after completing their training. The volunteers are primarily the ones who take up various **fundraising initiatives**, cultural programs and several other awareness programs of IPM.



GLIMPSES OF THE PREVIOUS CURIOS FESTIVAL PROGRAMS



GLIMPSES OF THE PREVIOUS CURIOS FESTIVAL DECORATIONS

The annual **Curios** is the largest **Palliative Care Carnival** organized by IPM and envisioned by its youth volunteers. Curios is the grandest fundraising initiative orchestrated by the institute. The festival hosted in the beginning of each year brings together individuals from diverse backgrounds, including healthcare professionals, artists, educators, and members of the public onto the IPM campus. Through a vibrant array of workshops, performances, exhibitions, and discussions, the Curios carnival helps promote the ethos of holistic care championed by IPM to a wider audience. Curios is conducted entirely at IPM's campus and is open to both local and international communities.

The intention behind Curios is to blend palliation with festivity to raise awareness about palliative care, promote death literacy, and as fundraising for patient care. Through propagating awareness about palliative care, Curios aims to generate **compassionate communities** with a deeply-rooted understanding of empathy. Each year, the Curios festival sets up commercial stalls in an attempt to sell the products made by the IPM residents to bring in donations from the thousands of people visiting the institute at the time of the fest. The funds collected from the initiative are transferred onto various rehabilitation projects and facilitation programs for the IPM residents.

Organisation Structures of IPM

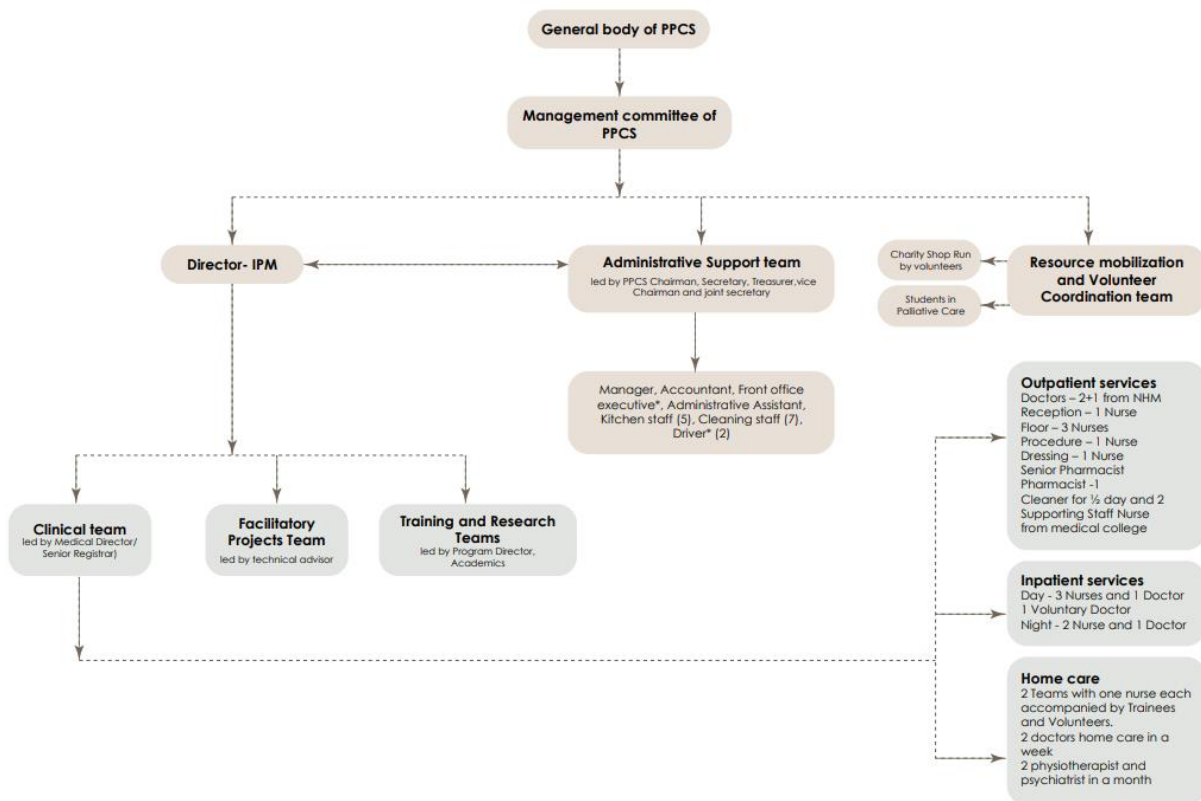
IPM has played a key role in shaping the globally renowned "Kerala Model" of palliative care with an emphasis to strengthening **the social aspect** of patient care. The representatives at IPM believe that patients can be healed with the help of a compassionate environment, thus working tirelessly to provide and promote quality care to everyone who arrives at the organisation seeking refuge. The institute operates 24/7 to cater to inpatient needs and designates their daytime hours for outpatient services. Research and training facilities maintain regular office hours while palliative volunteers would often remain on campus throughout the day. IPM provides timely home care services for registered patients around the district through its on call mobile healthcare unit.



THE REPRESENTATIVES AT IPM



THE GROUP OF VOLUNTEERS AT IPM



THE FUNCTIONING STRUCTURE OF IPM

IPM has around 20 permanent staffs, 16 temporary staffs and 5 probationary workers at the campus. In addition to that 7 cleaning staff in charge of sanitation and laundry and round the clock ambulance drivers are present within the campus. The functions of IPM extend beyond their campus as they are **actively involved** in community outreach, home care and rehabilitation programs. A team of pharmacists and healthcare workers and professionals conduct periodic visits to the houses of registered patients, ensuring that they receive timely diagnosis and treatment in the comfort of their own home. The **homecare** department ensures that medicines are provided in time and constantly monitors the need for any assisted treatment for the patients registered with IPM.



IPM HEALTH WORKER IN TRANSIT FOR HOMECARE



HEALTHCARE PROFESSIONAL IN HOME CARE DIAGNOSIS



A YOUNG GIRL SHOWING HER AFFECTION TO HER DOCTOR



A STILL FROM IPM'S HOME CARE VISIT



STUDENTS SHOWING THEIR SUPPORT TO IPM'S CAUSE



FILM STAR MAMMOOTTY INTERACTING WITH IPM RESIDENTS

03. Scope of Intervention.

Need for a Social Component

IPM has been around providing crucial healthcare services for about 30 years and despite significant advancements in understanding and delivering palliative care, stigma continues to surround it. Palliative care is often misunderstood as the point of giving up hope or as a sign that death is imminent, leading to reluctance in seeking or accepting its services. There's a **prevailing misconception** that palliative care is solely for end-of-life situations, overlooking its role in enhancing quality of life for patients facing serious illnesses at any stage. This stigma can result in delayed access to crucial supportive services, unnecessary suffering, and diminished quality of life for patients and their families.



The existing IPM campus lacks a converging point that can bring the people of IPM, people inside IPM and the people outside IPM together. A place, where the members of IPM can spread their message, the residents can share their experiences and the public can extend their helping hands. The implementation of such a **social plug-in** as a component of the masterplan can broaden IPM's reach significantly, allowing patients to share their stories with a larger audience, and easing the challenge for volunteers to engage the public onto the campus. By providing a platform for sharing experiences, insights, and support, the space could host educational workshops, awareness campaigns, and community events, thereby expanding IPM's outreach and impact beyond its physical confines. Furthermore, by promoting dialogue, empathy, and social interaction, the social space would contribute to destigmatizing palliative care and raising awareness about the importance of holistic support for serious illnesses.



VIEW FROM THE ENTRANCE OF THE IPM CAMPUS

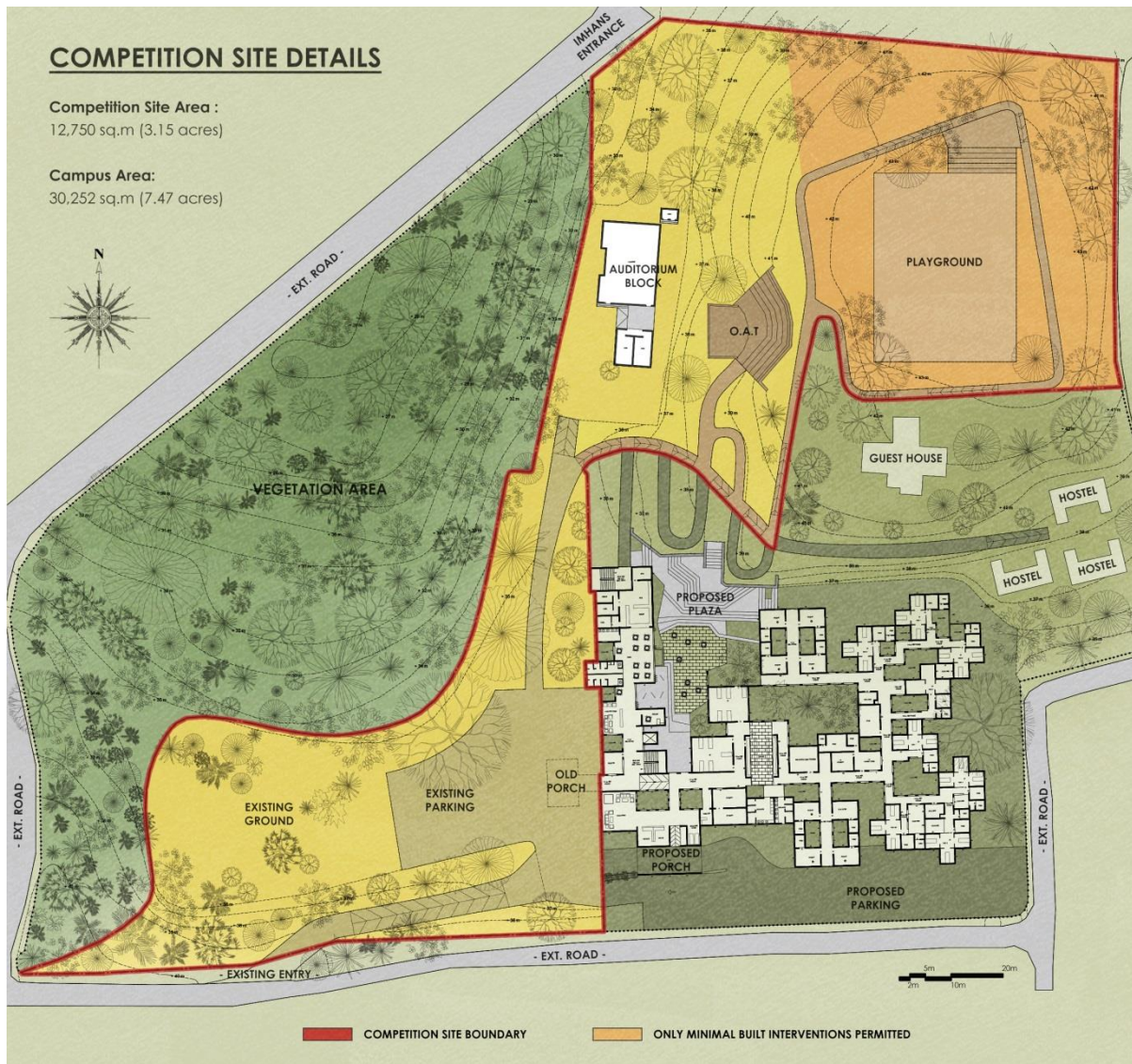


SITE ZONING PROPOSED BY IIA

As per the new masterplan proposed by IIA, the IPM campus was divided into three zones, with the social zone positioned between the vegetation zone and the campus blocks. The concept aimed to ensure that the social spaces act as a beacon of public engagement without disrupting the dense vegetation or interfering with the functional aspects between the campus blocks. The designated area for the social intervention encompassed the current entry road to the campus, the old porch, old building entrance, existing parking facilities, a ground area in front of the palliative building, and the auditorium block and its surroundings, totalling approximately 3 acres.



SITE FOR SOCIAL INTERVENTION PROPOSED BY IIA



COMPETITION SITE DETAIL

The Vision

IIA envisions transforming IPM into a more socially engaging campus where the institute can translate its philosophy of care as a culture to the public. The major intentions of the masterplan proposed by IIA are:

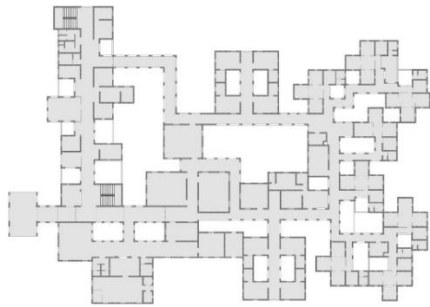
1. **Inculcating a larger vision to promote care as a culture.**
2. **Enhance the experience and facilities for the stakeholders.**
3. **Foster social gathering and opportunities through informal urbanism.**
4. **Instilling compassion through activities, interactive learning and incite thoughtful reflections.**
5. **Developing a centre of excellence in palliative care research, compassion and care with better public involvement.**

IPM provides an opportunity and space for caregivers and patients together to make the place feel belonged. Inside the campus everyone is part of an extended family, constantly reminding each other that it's alright, we are here. Moreover, IPM enables the patients to **think about three major questions**:

- How would I want to remember the life ahead?
- How would I want to be remembered by others?
- How would I like to greet death when it arrives?

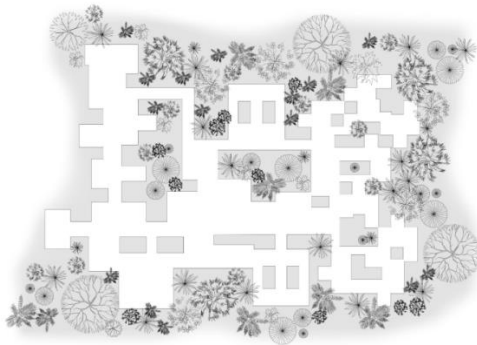
And IPM trains their volunteers to help them **find the answer to these questions**.

IPM occupies a very special position in the heart of the patients and their families as a place that was there to hold on to in a time of uncertainty and as a place that hold on to them in a time of need. IPM is collection of several stories of courage, compassion and care; and stories of a place that became **an entity** that embraced everyone, **an environment** that dissolved all worries and **the people** who made everyone feel at home.



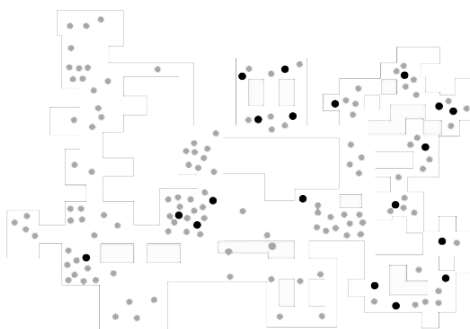
AN ENTITY

THAT EMBRACES EVERYONE



AN ENVIRONMENT

THAT DISSOLVES THE WORRIES

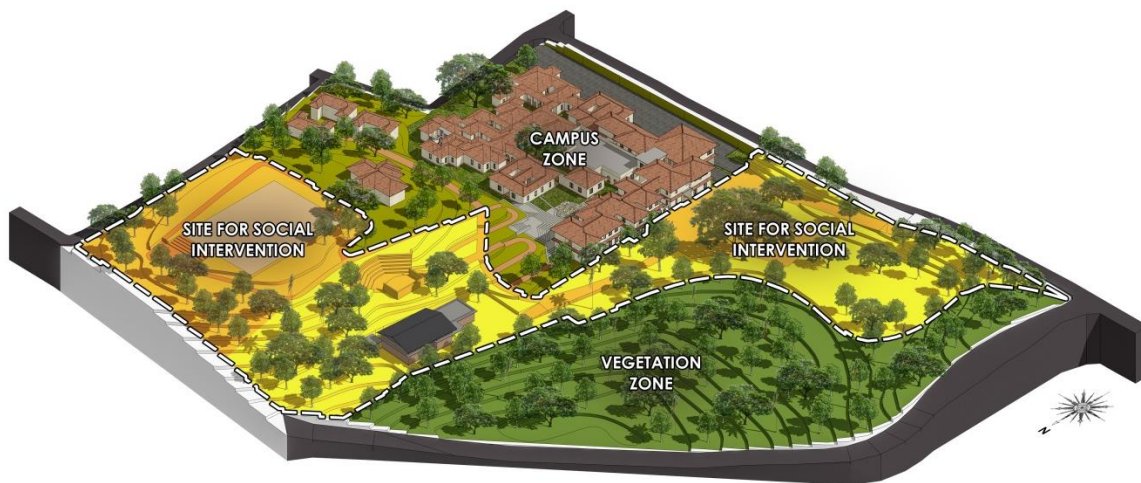


& THE PEOPLE

THAT MAKE THE PLACE HOME

Designing a SOCIAL PLUG-IN

The social plug-in inside the IPM campus is proposed with an aim to enhance the overall experience for patients, families, caregivers, and staff. The space should be able to serve as a hub for fostering social interaction, community engagement, and emotional support within the campus environment. The proposed social plugin should be able to generate proper recreational spaces on the site that encourage outdoor activities and public gathering. More importantly, the design of the social plug-in should align with the holistic principles of palliative care, community participation and human compassion upheld by the IPM.



ISOMETRIC VIEW OF THE COMPETITION SITE ON THE IPM CAMPUS

The design requirements include:

- Redefining the campus entrance to create a memorable arrival experience.
- Introducing new recreational spaces suitable for all user groups of the campus.
- A community library for the public.
- A gift shop to display and sell the products made by the IPM residents.
- A medical library for professionals.
- A discussion pavilion for having conversation on life, death and compassion.
- Multifunctional modular hall/s to be purposed as classrooms and presentation studios.
- A media studio for conducting international webinars and facilitating social media functions.
- Parking areas for the IPM visitors (optional).

* The total built area expected from the design outcome should not exceed 12,000 sq.ft.

* Detailed facility program with area will be provided as a downloadable docket after registration.

* Dense vegetation zone on the north-western part of the campus should be viewed as an eco-sensitive area.

* Participants should keep built interventions minimal near the proposed playground area.

* Only moderate interventions that do not significantly alter the structure are permitted on the Auditorium Block.

04. Key Dates.

20 March 2024: Registration Commences

15 April 2024 (23:59 IST): Registrations Closes

16 April 2024: Opening of Submission Portal

30 April 2024 (23:59 IST): Submission Deadline

Dates for the announcement of winners and award ceremony will be published later.

05. Submission Guidelines.

Eligibility Criteria.

- Open to all IIA Members having paid subscription up to 2024-2025 or Life Time Members or those who have applied for IIA membership (with proof of application).
- Minimum size of the team is 1 member and maximum is 5 members.
- Each team shall have a Team lead under whose name the registration shall be done.
- Architects from different firms / freelance architects can combine to form a team, provided that the Team lead is a registered member of the IIA or has applied for membership.
- Persons involved in the organising and judging of this competition, including their families and professional colleagues from their respective organisations are not eligible to participate in this competition.

Guidelines & Specifications for Entries

The submission process is entirely online, through our website. Entries must be original work created by the participant/s. If a team wishes to submit multiple entries for the competition, they must complete separate registrations for each submission.

The participants are requested to upload the following documents:

- A maximum of up to 9 A2 size sheets in JPEG format are to be uploaded (maximum size of entire set to be uploaded should be 60 MB or less) explaining the designs with relevant drawings, 3D, sketches and photographs.
- Walkthroughs / related videos can be uploaded as a 'Private YouTube' video and the link can be submitted.
- Presentation can be in colour or B&W. Please ensure that all the drawings are legible and are not superimposed over other images.

- A Report Document in a single A4 in Microsoft Word format (.doc or .docx) is to be uploaded, giving the relevant details explaining the design. (Colour – Black. Font – Arial. Size – 12)
- All mandatory fields are to be filled while uploading the entry.
- A brief biodata of the architect / firm / team with a recent passport size colour photograph is to be submitted with the entry.
- Please note that participants should NOT mention their name or firm's name or IIA membership number or any other identification mark in the submitted materials like the composed A2 sheets, reports etc.

The entry materials submitted for the competition will be retained as property of IIA. This competition is organized as an Ideas competition and is meant for enlightening the architecture community about Palliative care. The winning entries may or may not be executed. In case the selected design is executed as it is or after modification, there will not be any additional compensation to the team, nor will there be any further involvement in the process.

The Indian Institute of Architects Kerala Chapter shall be free to publish (with due credits) the entries in Institute's publications or display the same in Exhibitions organized by the Institute. No claims for compensation shall be entertained by the IIA on any account.

If the guidelines are not fully abided by the participants during entry/registrations, the entry will be disqualified.

Clarifications, if any, may be sent by email to iiacalicutcentre@gmail.com

Registration.

1. Online registration can be completed on the official website: oasis.iiakerala.org until MONDAY 15th APRIL 2024 AT 23:59 (IST). A confirmation email will be sent acknowledging the receipt of the registration.
2. Once the submitted details, including the IIA registration is verified from our end, we will send you a confirmation mail with the registration number for the participating team and the link for downloading the competition work files.
3. Each registered participant may submit their queries via email to iiacalicutcentre@gmail.com until 25th APRIL 2024 23:59 (IST)

Entry Fee.

Registration is free of cost for all participants.

06. Work Files for Participants.

General information will be available for the potential participants on the official website:

<https://oasis.iikerala.org/>

For all registered competitors the following materials will be available via direct-download.

- Site Plan (in .dwg file format) of the competition site on the proposed campus masterplan.
- Sketch Up model (in .skp file format) of the site on the proposed campus.
- Detailed area statement for the design program.
- Photographs of the existing conditions of the competition site: [Site Photographs Google Drive](#)

07. Evaluation & Jury.

- A distinguished Panel of Jury will assess all the entries.
- The Jury will comprise of a Panel of eminent Architects as well as members from IPM.
- The final decisions, deliberations, opinions and proceedings of the Jury shall not be made public or otherwise revealed.
- The Jury can by majority opinion, remove any entry from the evaluation process.
- The Jury at its discretion can choose not to confer the Prizes at all.
- Decision of the Jury shall be final and without appeal and shall be binding on all participants.
- The competition is solely focused on generating innovative ideas; the winning proposal is not intended for on-site implementation.

08. Awards.

First Prize	:	Rs.2,00,000 /-
Commendation Prize (maximum of 3)	:	Rs.50,000 /-

All winning entries will be published in the official website of IIA Kerala Chapter - www.iikerala.org.

09. Contact Us.

Email us for queries : iiacalicutcentre@gmail.com

For,

Oasis.

**A SOCIAL PLUG-IN
FOR INSTITUTE OF PALLIATIVE MEDICINE**
Kozhikode, Kerala.

*** National Architecture Design Competition ***

Ar. Vinod P Cyriac
Chairman,
IIA Kerala Chapter.

Ar. Noufal C Hashim
Chairman,
IIA Calicut Centre.

Ar. Sujith G S
Convenor,
Oasis Competition.



social